

# Northern Health Authority: Public Health in a rural RHA in BC

Dr. Sandra Allison MPH CCFP FRCPC DABPM

Chief Medical Health Officer

October 6, 2016



# Objectives

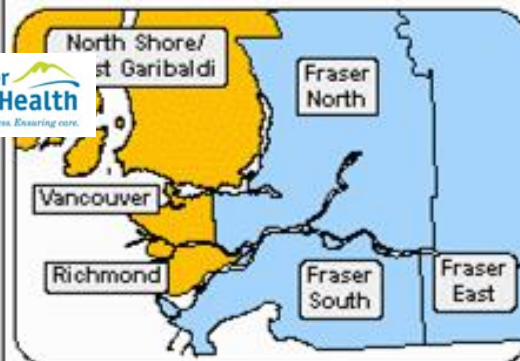
- Describe the structure and function of the public health programs in Northern Health Authority - BC
- Situate the NHA in the Public Health System in BC
- Describe unique opportunities and challenges of rural public health



# British Columbia Health Authorities and Health Service Delivery Areas

## Health Authorities

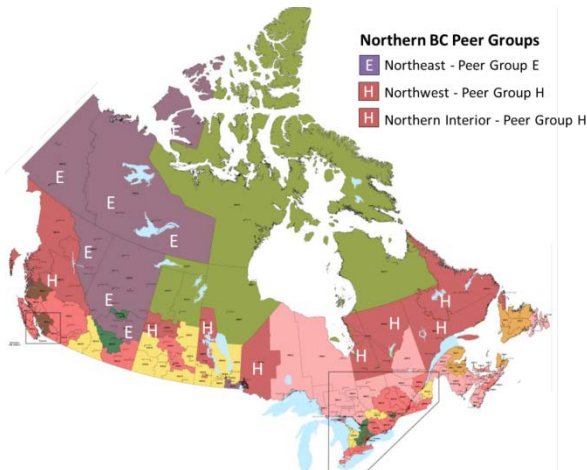
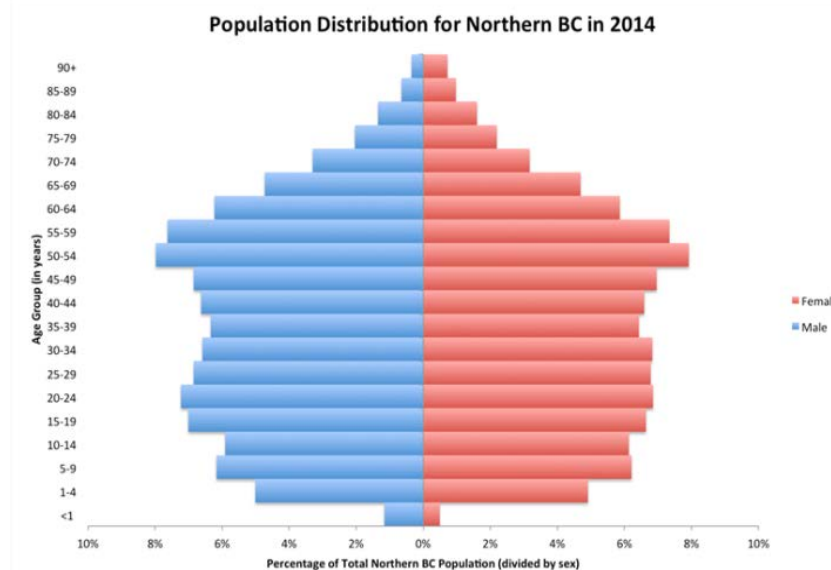
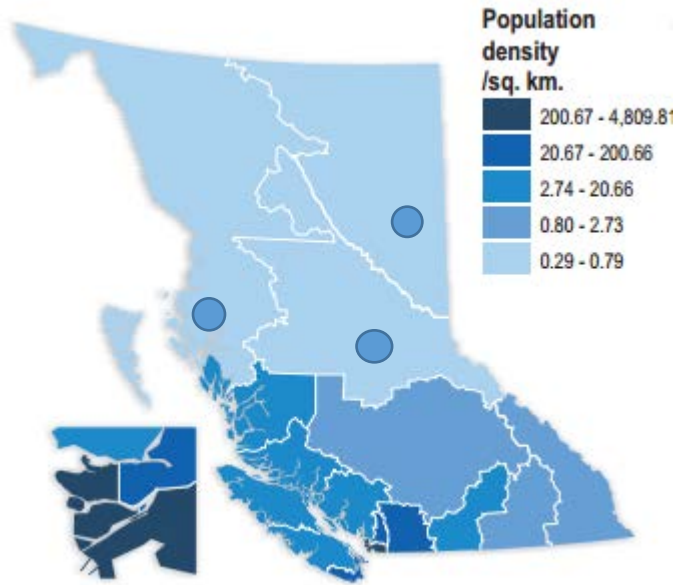
-  1. Interior
-  2. Fraser
-  3. Vancouver Coastal
-  4. Vancouver Island
-  5. Northern
- 6. Provincial Health Service (province-wide)



Prepared by: BC Stats, June 2003

Note: The Niagara Health Council is an independent health authority

# Northern BC facts



Peer Group E Members	Peer Group H Members
Northeast, B.C.	Northwest, B.C.
Yukon	Northern Interior, B.C.
Northwest Territories	Prairie North, SK
Central Zone, AL	Prince Albert, SK
North Zone, AL	Parkland, MB
South Eastman, MB	Northwestern, ON
	Region du Nord, QU
	Region de la Cote, QU
	Labrador-Grenfell

620 000 km<sup>2</sup>

288 000 people

18% Aboriginal population

~3400 children per year of age

Over 80 FN Communities

30 Municipalities

3 HSDAs/ 17 LHAs

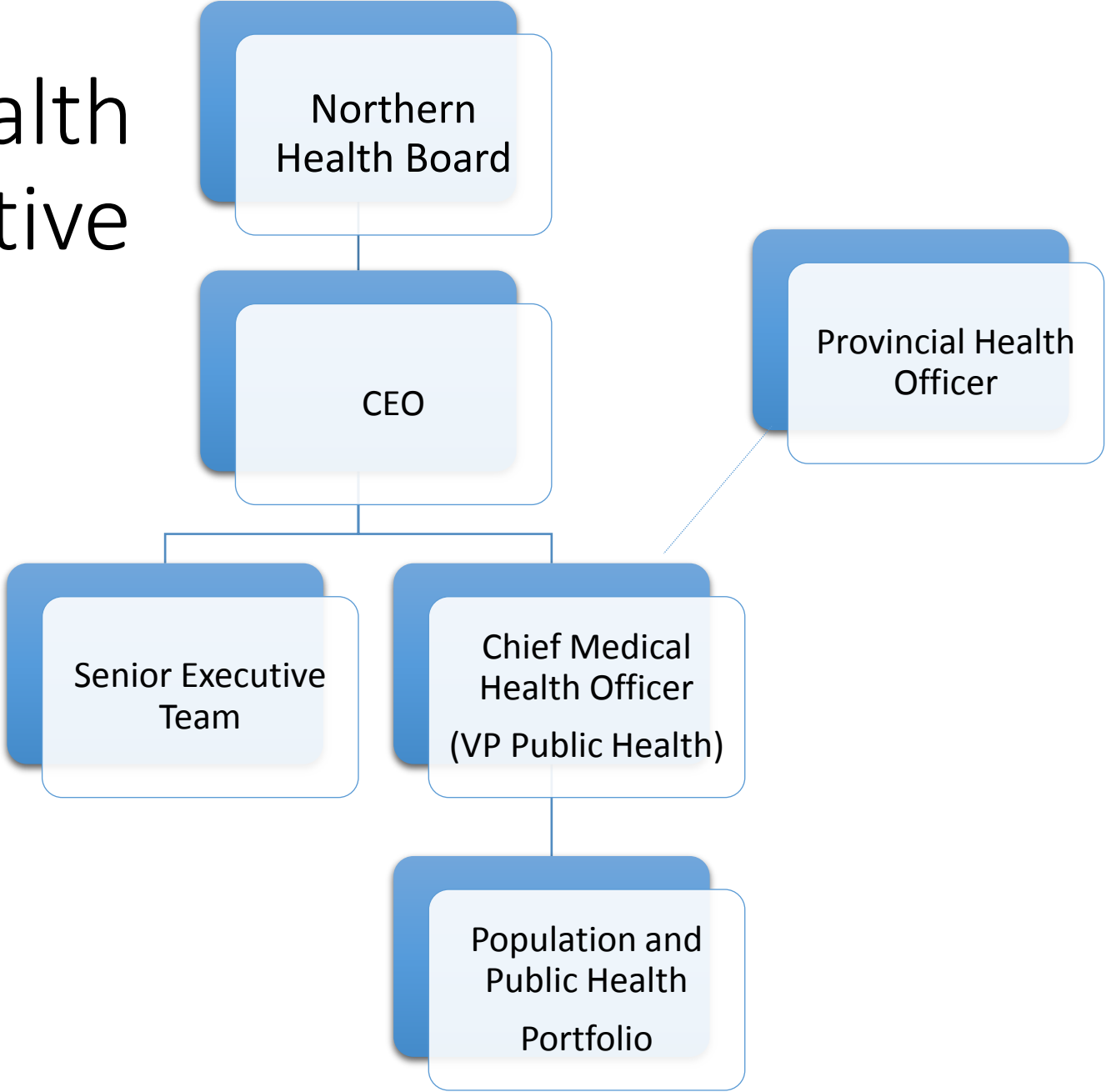
School Districts

RCMP Districts

Regional Districts and

Regional Hospital Districts

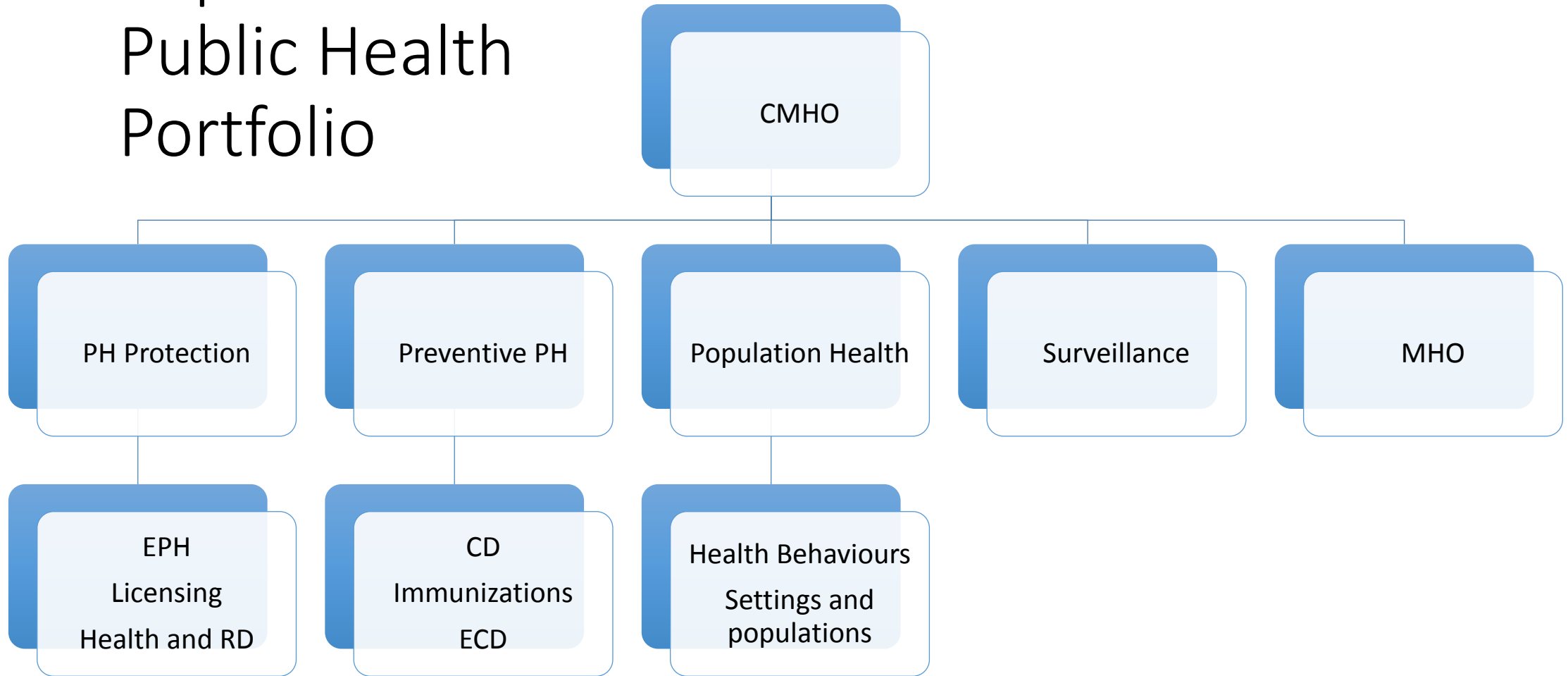
# Northern Health Senior Executive Leadership



# Functions of Public Health

- Disease Prevention
- Injury Prevention
- Health Promotion
- Health Protection
- Health Needs Assessment
- Emergency Preparedness

# Population and Public Health Portfolio



# Public Health Protection

## Environmental Public Health

- Air and water quality, food safety, personal service establishments
- Enteric disease investigations

## Community Care Facility Licensing

- Residential care facilities
- Daycares

## Health and Resource Development

- Mitigating impacts of industrial development



# Preventive Public Health

Communicable Disease Control

Immunization programs

Healthy Child Development

- Prenatal to school age

Sexual and Reproductive Health

Harm Reduction

# Population Health Programs

## Healthy Living and Chronic Disease Prevention

- Tobacco reduction
- Physical activity
- Healthy nutrition
- Mental Wellness
- Injury Prevention

## Healthy Communities and Schools

- Comprehensive School Health
- Healthy Community Development
- Healthy Public Policy

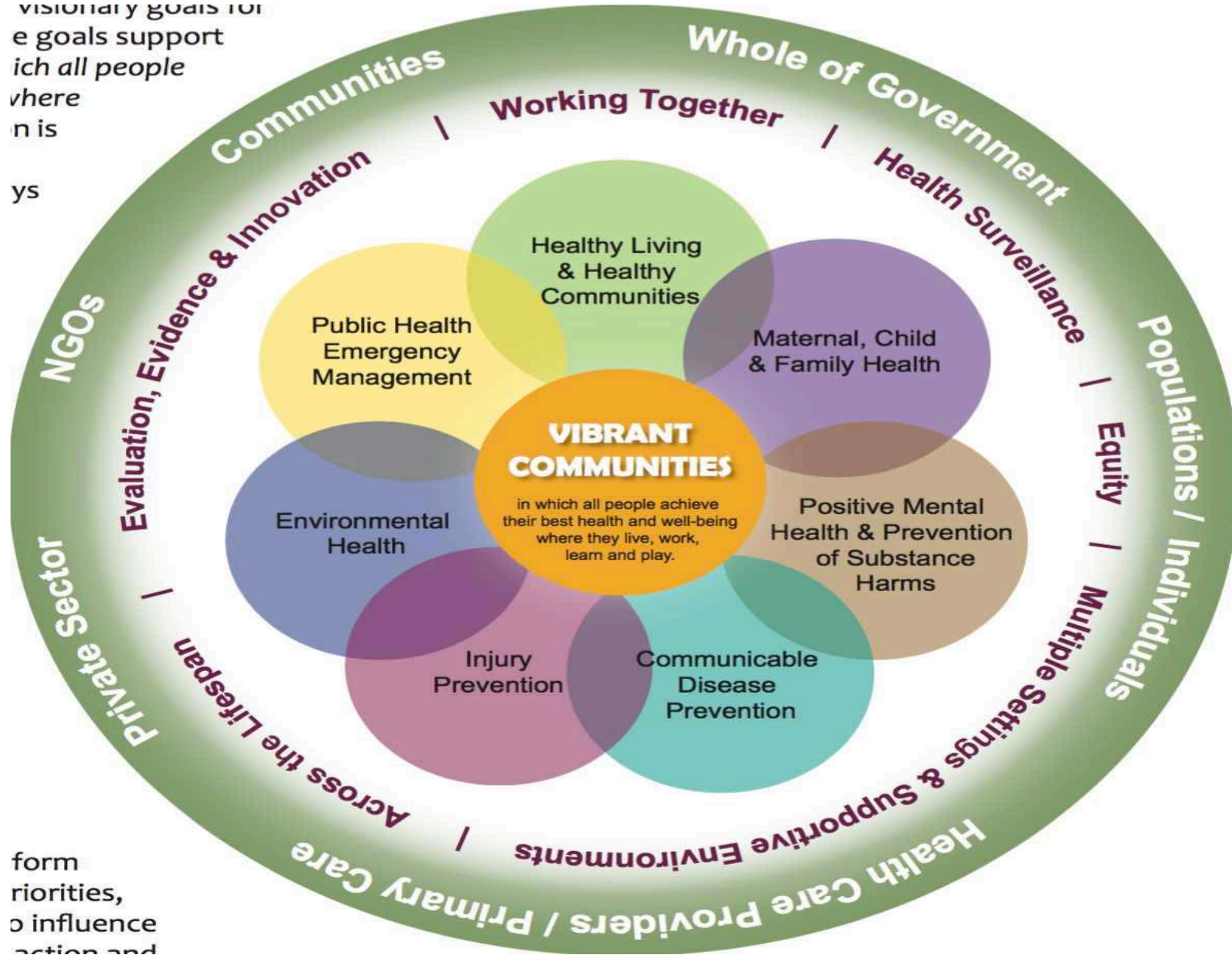
Surveillance and Reporting

Medical Health Officers

Public Health Emergency Preparedness

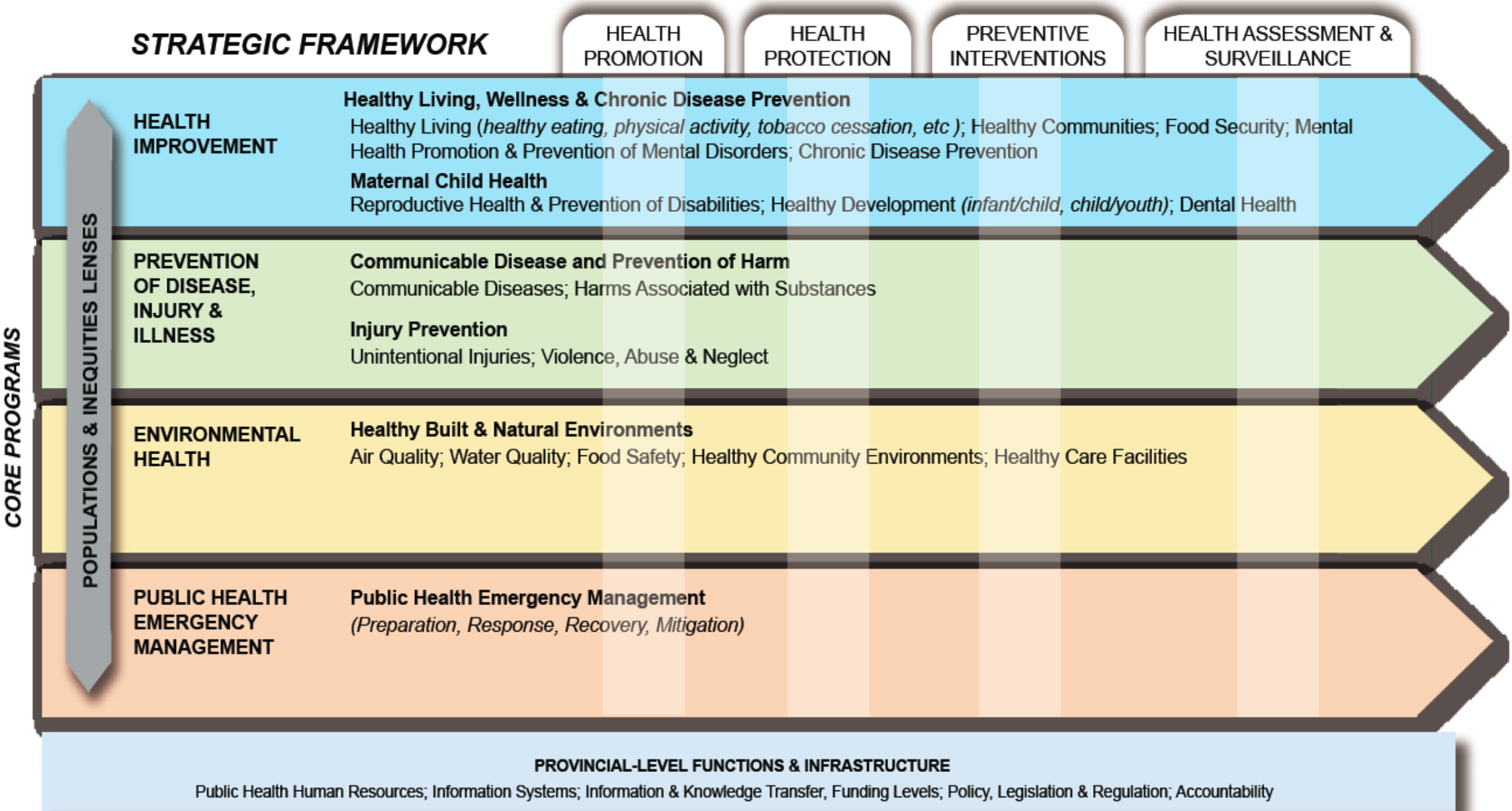
visionary goals for  
e goals support  
ich all people  
where  
n is

ys

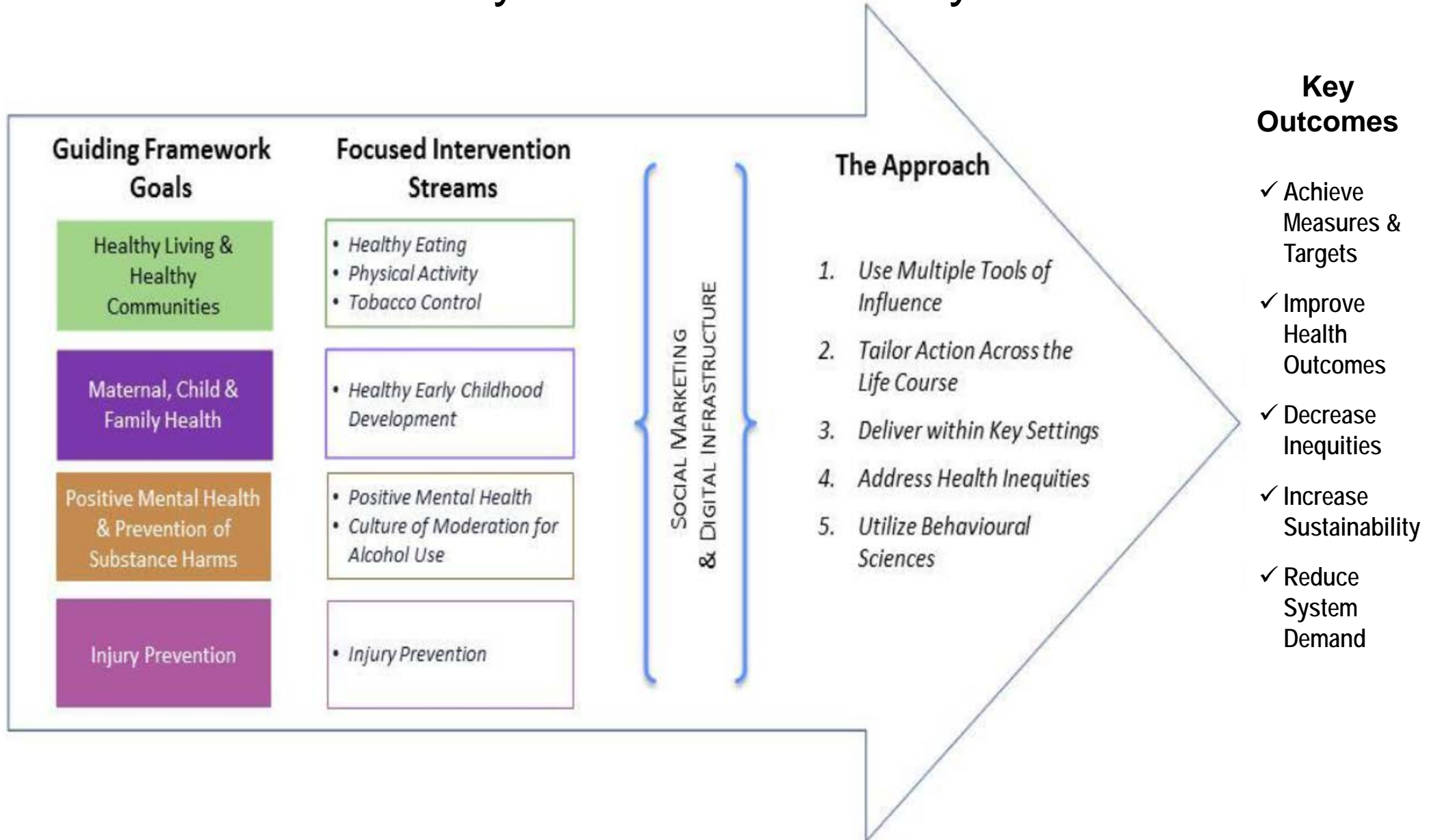


# Guiding Framework for PH in BC

## PUBLIC HEALTH STRATEGIES

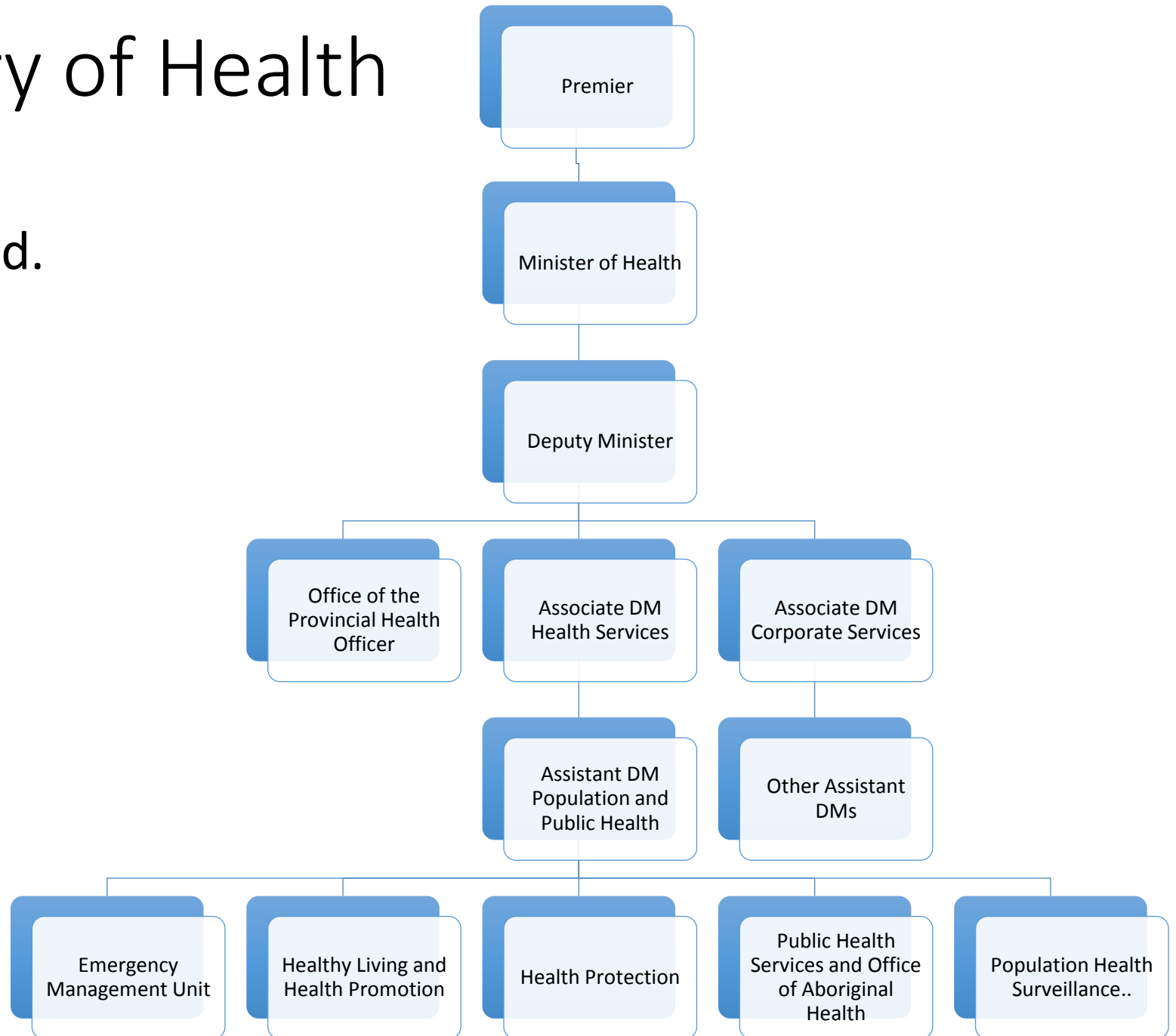


# Healthy Families BC Policy Framework



# BC Ministry of Health Overview

- It's complicated.





# Health Partners in BC

Ministry of Health

Office of the Provincial Health Officer

Health Authorities

Regional Health Authorities (5)

First Nations Health Authority

Provincial Health Services Authority  
(It's complicated.)



Don't forget:

Health Insurance BC

Patients

Colleges, Boards, Commissions

Vendors



# Health Partners in BC

Ministry of Health

Office of the Provincial Health Officer

Health Authorities

Regional Health Authorities (5)

First Nations Health Authority

Provincial Health Services Authority

(It's complicated.)



Don't Forget:

Health Insurance BC

Patients

Colleges, Boards, Commissions

Vendors

# Provincial Health Services Authority

## *Agencies*

- BC Cancer Agency
- BC Children's Hospital & Sunny Hill Health Centre for Children
- BC Emergency Health Services
- BC Mental Health and Addiction Services
- BC Centre for Disease Control
- BC Renal Agency
- BC Transplant
- BC Women's Hospital & Health Centre
- Cardiac Services BC
- **Perinatal Services BC**



BC Centre for Disease Control



**Perinatal Services BC**

An agency of the Provincial Health Services Authority

# Provincial Health Services Authority

## *Programs and Services*

- Provincial Occupational Health and Safety Services
- BC Autism Assessment Network
- BC Early Hearing Program
- BC Surgical Patient Registry
- Indigenous Health
- LML Pathology and Lab Medicine
- Mobile Medical Unit
- Health Emergency Management BC
- Population and Public Health
- Provincial Language Services
- Services Francophones
- Stroke Services BC
- Trans Care BC
- Trauma Services BC
- Provincial Infection Control Network of BC

# BC Centre for Disease Control *Services*

## Clinical Prevention Services

- TB services
- STI/HIV prevention and control
- Hepatitis services

Communicable disease prevention and control services

PH Emergency Management

Environmental Health

Immunization Programs

# BC Centre for Disease Control *Resources*

## Clinical Resources

- Antimicrobial Resistance
- Case Definitions
- Communicable disease control
- Harm Reduction
- Immunization guidance

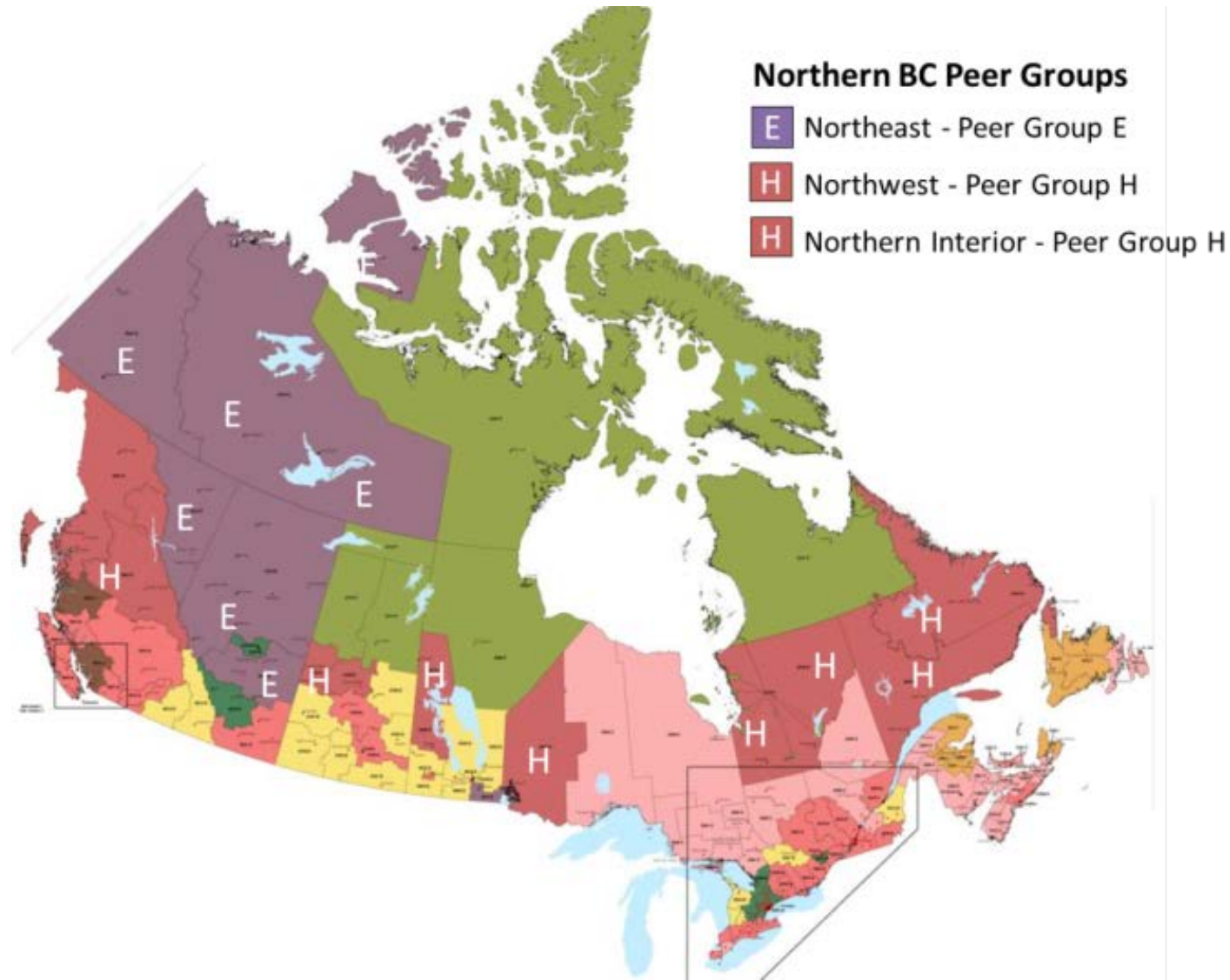
## Professional Resource

- Laboratory Services
- Surveillance Forms
- Vaccine and Pharmacy Services
- Health Equity and Environmental Health

## Data and Reports

## Education and Development

# Rural PH opportunities and challenges

















# How Healthy Are Rural Canadians?

[https://secure.cihi.ca/free\\_products/rural\\_canadians\\_2006\\_report\\_e.pdf](https://secure.cihi.ca/free_products/rural_canadians_2006_report_e.pdf)

- Geography and weather, health HR, service allocation, funding models
  - Impacts access to preventive and diagnostic services and providers
- Determinants of health, including lower incomes and levels of education
  - Impacts health behaviours
- Higher overall mortality rates are a consequence.
  - Cardiovascular disease, respiratory disease, injuries, suicide

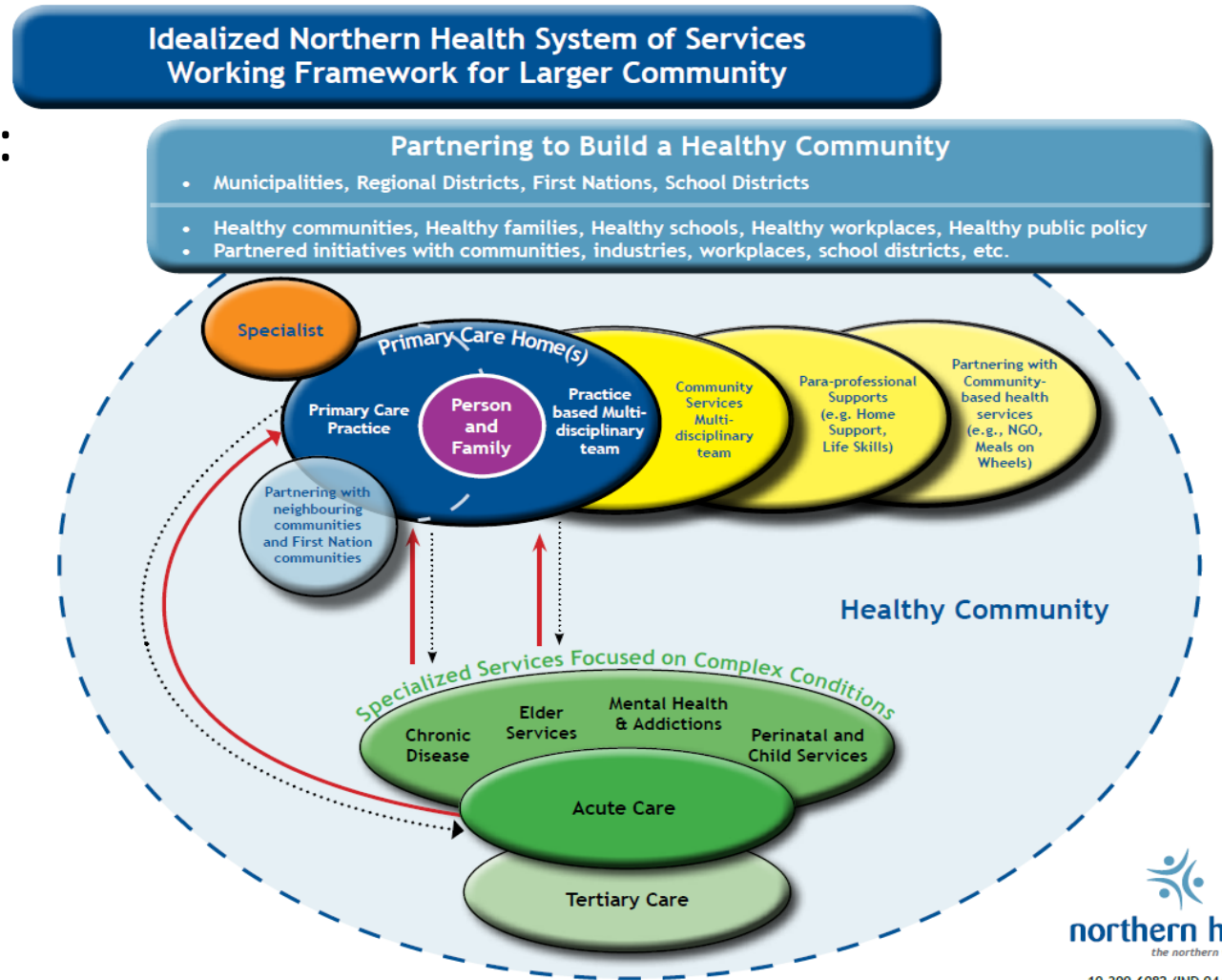
# Northern Health Authority: Addressing Challenges in Rural Primary Health Care

Implementation of an integrated primary health care system inclusive of:

- Public health
- Home and community care
- Mental Health and addictions

Providing coordinated services for key populations:

- Perinatal and children, frail elderly, chronic diseases, mental health and substance use



# The Vision of Primary Health Care in Northern BC

- Holistic cradle to grave, full scope primary health care
- Person and family centered manner
- Generalist community health nurse – full scope of competency
- Supported by inter-professional care teams and specialized programs
- Facilitated by technology, EMRs, and outreach
- Embedded in healthy communities
- Applying an equity lens, and
- Focused on improving population health

Thank you!!